

**SPECIFICATIONS**

1. 6" Plain End Inlet, 4" Vent.
2. Liquid holding capacity: 1500 gallons (200 cu. ft.).
3. Unit weight with composite cover: 1700 lbs.
4. Maximum operating temperature 140 °F continuous.
5. Highway rated covers: 16,000 lb. load rating.

**NOTES**

1. For gravity drainage applications only. Do not use for pressure applications.
2. 1" thick seamless High Density Polyethylene.
3. Unit supplied with built-in adapter for up to 6" of adjustability. Additional riser(s) available for deeper burial depth.
4. Cover placement allows full access to tank for proper maintenance.
5. For buried applications.
6. Lifting lug set for easy install.

**ENGINEER SPECIFICATION GUIDE**

Striem Bio Basin model BB-1500 shall be lifetime guaranteed and made in USA of seamless, molded High Density Polyethylene with minimum 1" uniform wall thickness. Tank shall be furnished for below grade installation with field adjustable riser system. Cover shall provide water/gas-tight seal and have a maximum 16,000 lbs load rating.

**THIRD PARTY STRUCTURAL ANALYSIS**

The BB-1500 has been structurally analyzed in accordance with the requirements of IBC 2012 and ASCE/SEI 7 for direct burial. The maximum burial depth and backfill material are specified in our installation instructions. The structural design has been reviewed and sealed by a professional engineer registered in the state of California. A sealed structural analysis report is available upon request.

**OPTIONS**

- 4P - 4" Plain Inlet / Outlet
- 4F - 4" Flanged Inlet / Outlet
- 4M - 4" Male Thread Inlet / Outlet
- 6P - 6" Plain Inlet / Outlet
- 6F - 6" Flanged Inlet / Outlet
- 6M - 6" Male Thread Inlet / Outlet
- AVA- 3 - Single level monitoring package.
- AVA- 4 - Multi-level monitoring package.
- Outlet with manual valve and panel
- Outlet with electronic valve and panel
- Low outlet connection (Specify Height: \_\_\_\_\_)
- HDK-1 - High Water Table Hold Down Kit

**TeleGlide RISER OPTIONS**

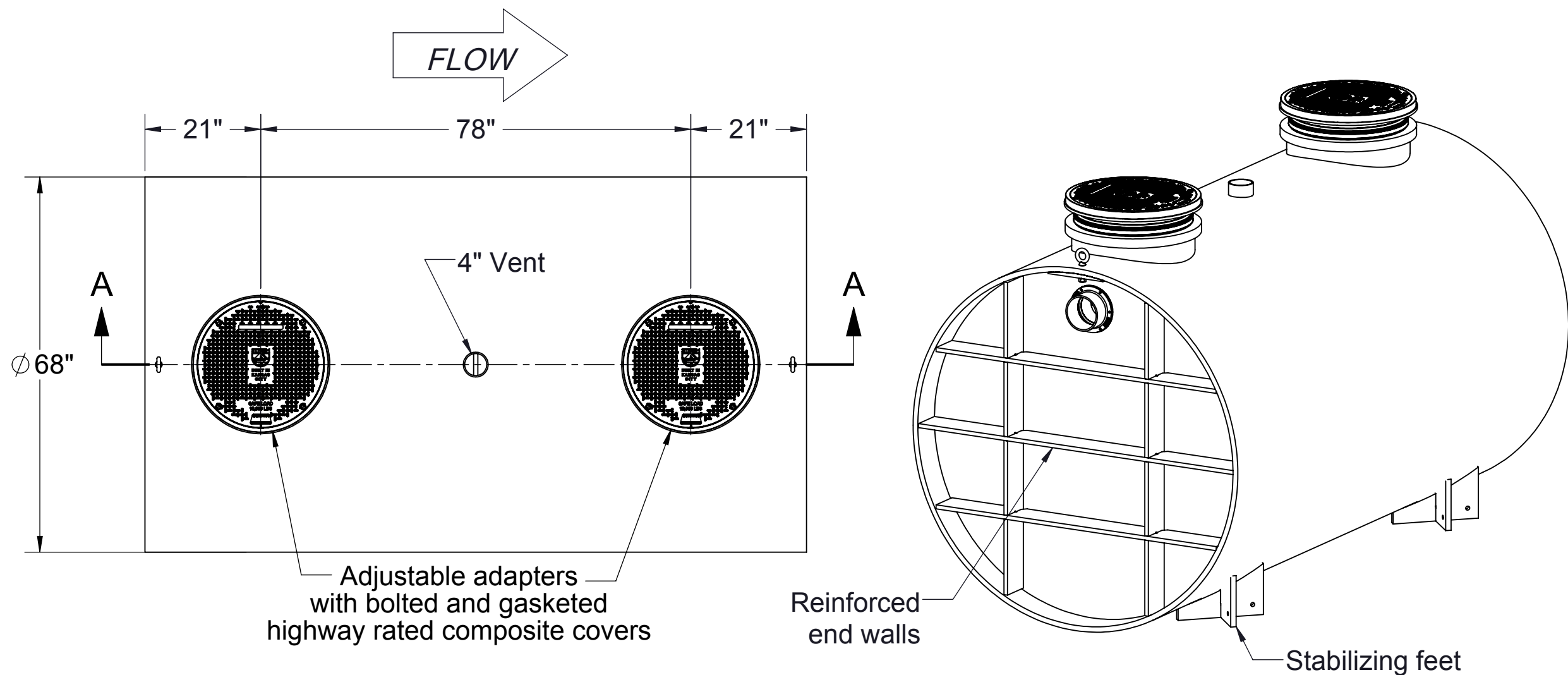
- SR24 (2) -> 6"-24"
- LR24 (2) -> 24"-39"
- SR24 (4) -> 39"-43"
- SR24 (2) + LR24 (2) -> 43"-58"
- LR24 (4) -> 58"-72"

**PO IS NON-CANCELABLE  
ORDER IS NON-RETURNABLE**

Signature of Approval: \_\_\_\_\_  
 Company: \_\_\_\_\_  
 Date of Approval: \_\_\_\_\_  
 Specifying Engineer: \_\_\_\_\_  
 Engineering Firm: \_\_\_\_\_

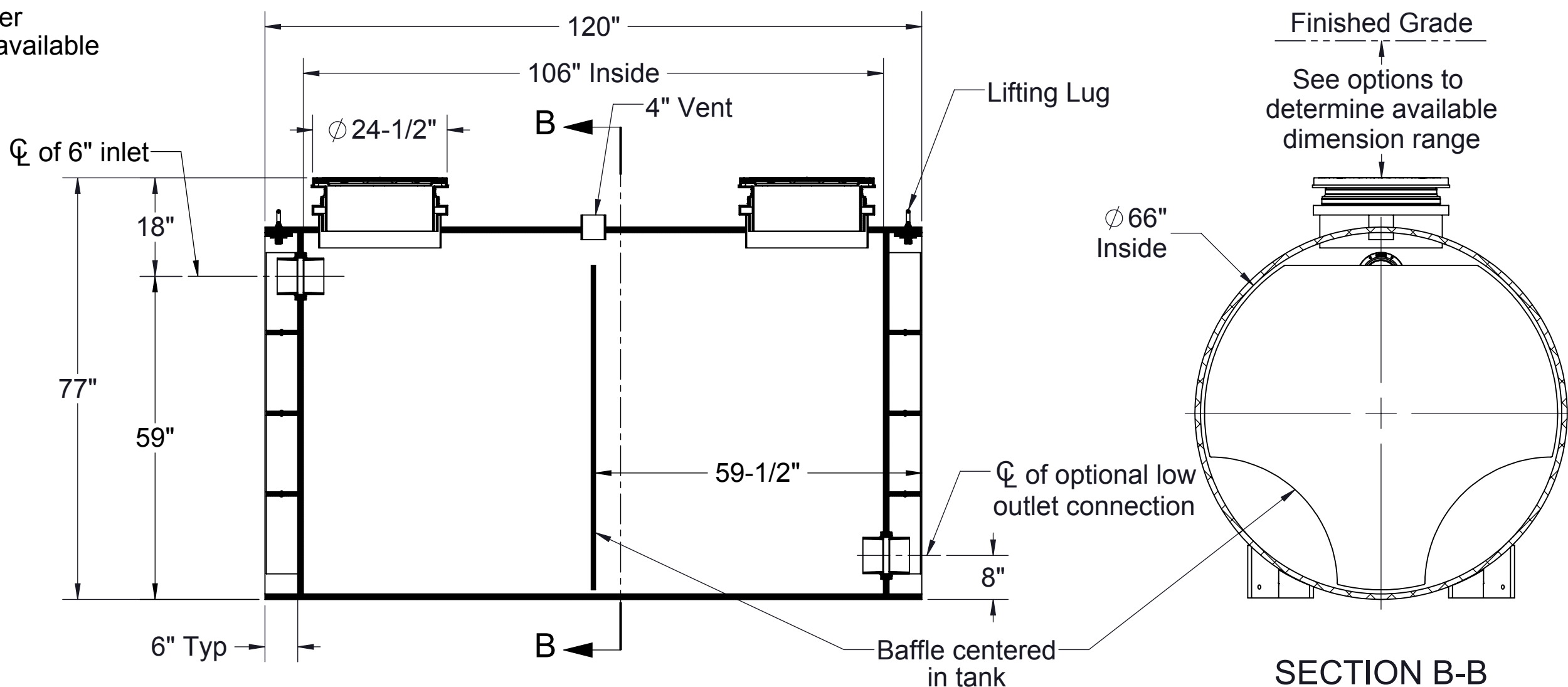
PROPRIETARY AND CONFIDENTIAL

THE INFORMATION CONTAINED IN THIS DRAWING IS THE SOLE PROPERTY OF STRIEM, LLC. ANY REPRODUCTION IN PART OR AS A WHOLE WITHOUT THE WRITTEN PERMISSION OF STRIEM, LLC. IS PROHIBITED.



**TOP VIEW**

**ISOMETRIC VIEW**



**SECTION A-A**

**SECTION B-B**

<b>MODEL NUMBER:</b> BB-1500	
<b>DESCRIPTION:</b> BIO BASIN POLYETHYLENE DECONTAMINATION TANK 1500 GALLON CAPACITY	
<b>DWG BY:</b> RS	<b>DATE:</b> 1/29/19
<b>REV:</b> 0	<b>ECO:</b>

**SPECIFICATION SHEET**

**Striem**  
 3100 Brinkerhoff  
 Kansas City, KS 66115  
 Tel: 913-222-1500  
 Fax: 913-291-0457  
 www.striemco.com

**Made in the U.S.A**