

SPECIFICATIONS (HLT-1176 & HLB-1176)

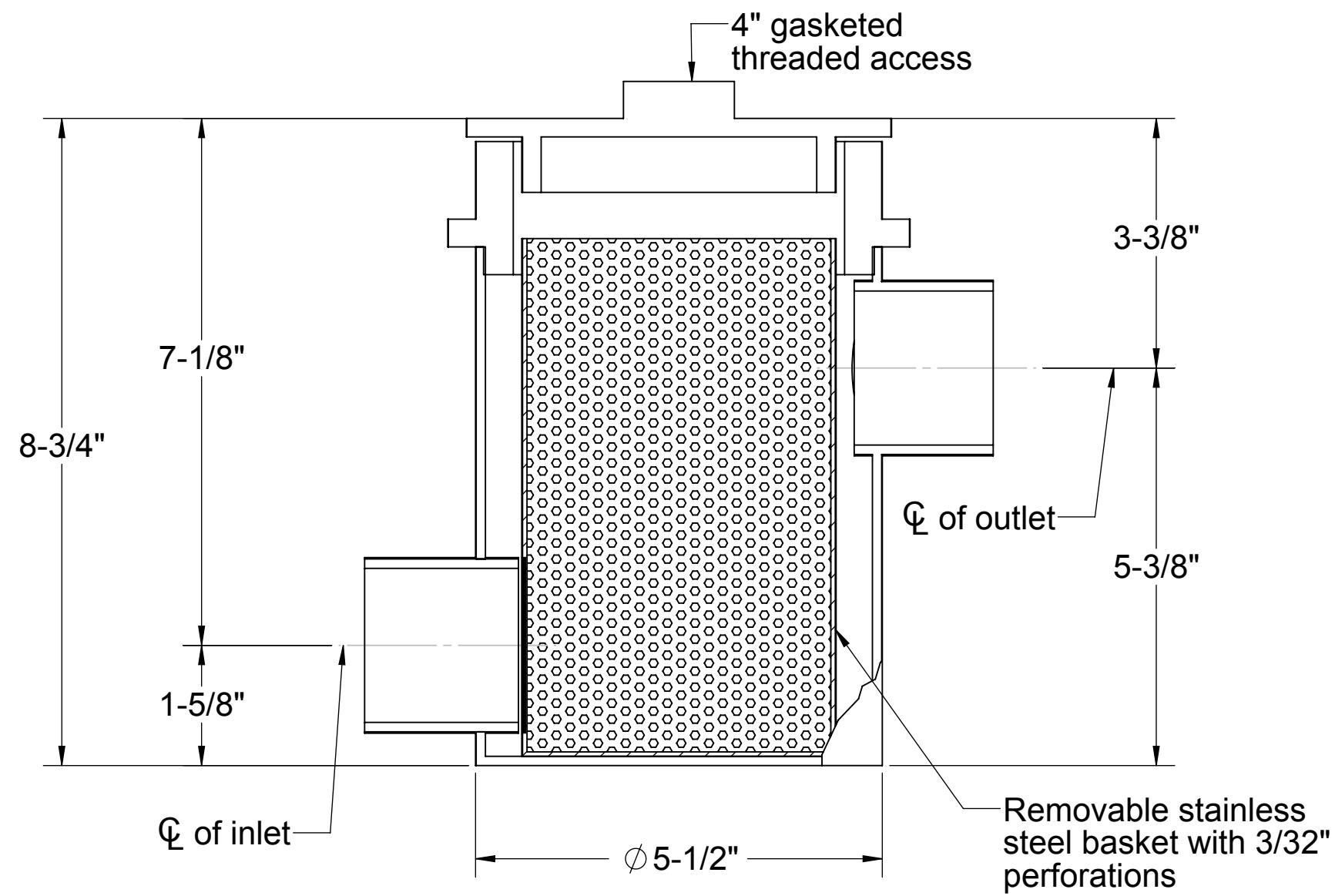
1. 1-1/2" or 2" plain end inlet and outlet connections.
2. Liquid capacity: 1/2 Gallon
3. Unit weight: 4 Pounds
4. Max. operating temperature: 190°F continuous.

NOTES

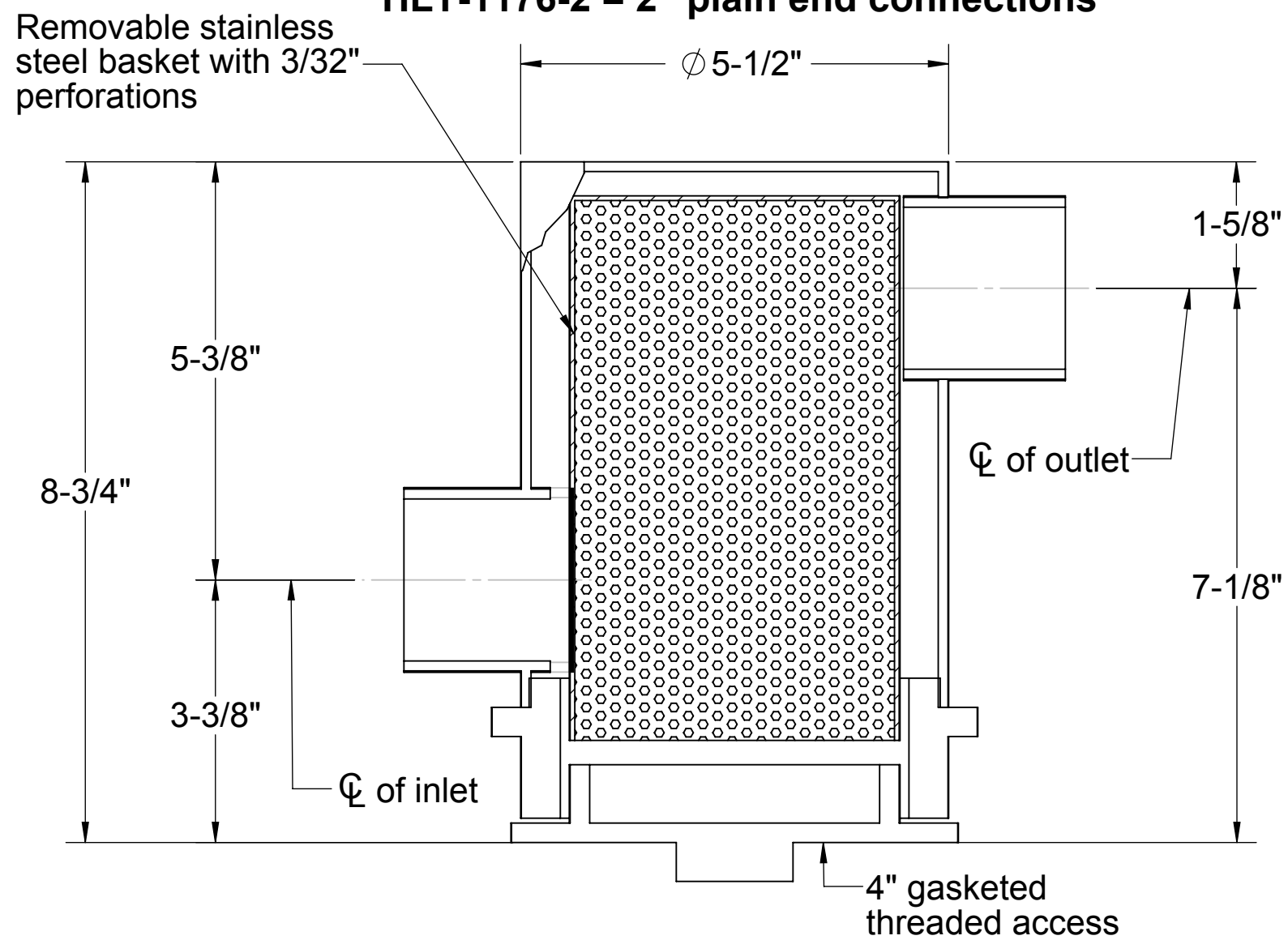
1. For gravity drainage applications only. Do not use for pressure applications.
2. 100% corrosion proof seamless polyethylene construction.
3. 4" threaded and gasketed inspection port.
4. Removable stainless steel debris basket with 3/32" diameter perforations.
5. Built-in sewer gas trap.
6. Watertight up to 36" of head.

ENGINEER SPECIFICATION GUIDE

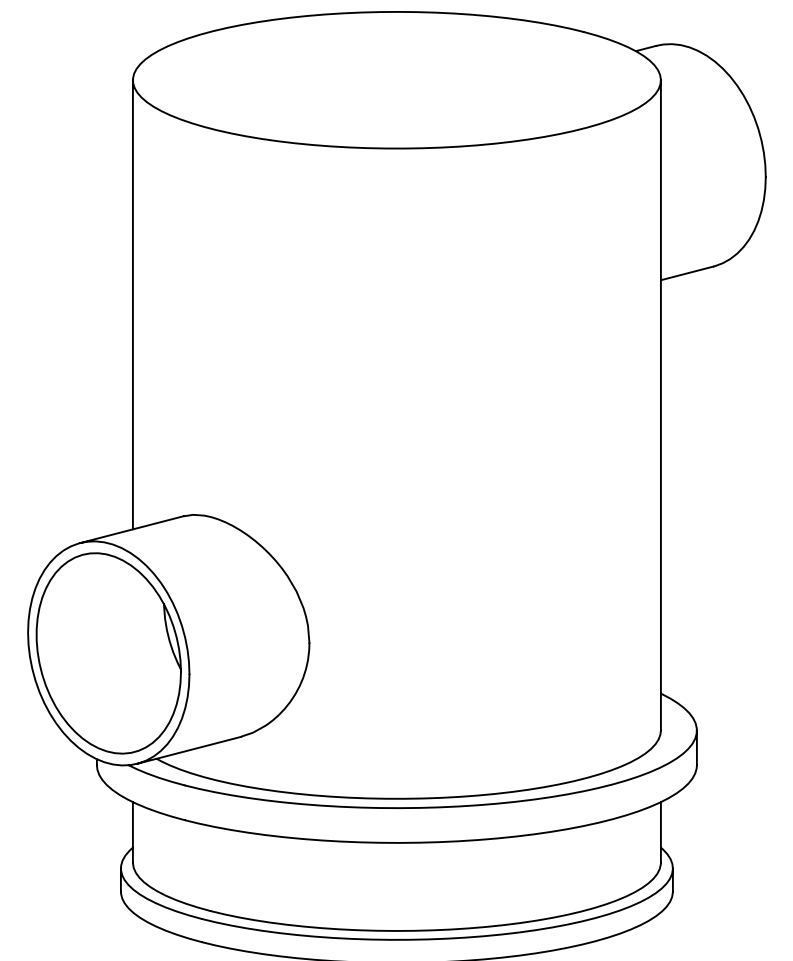
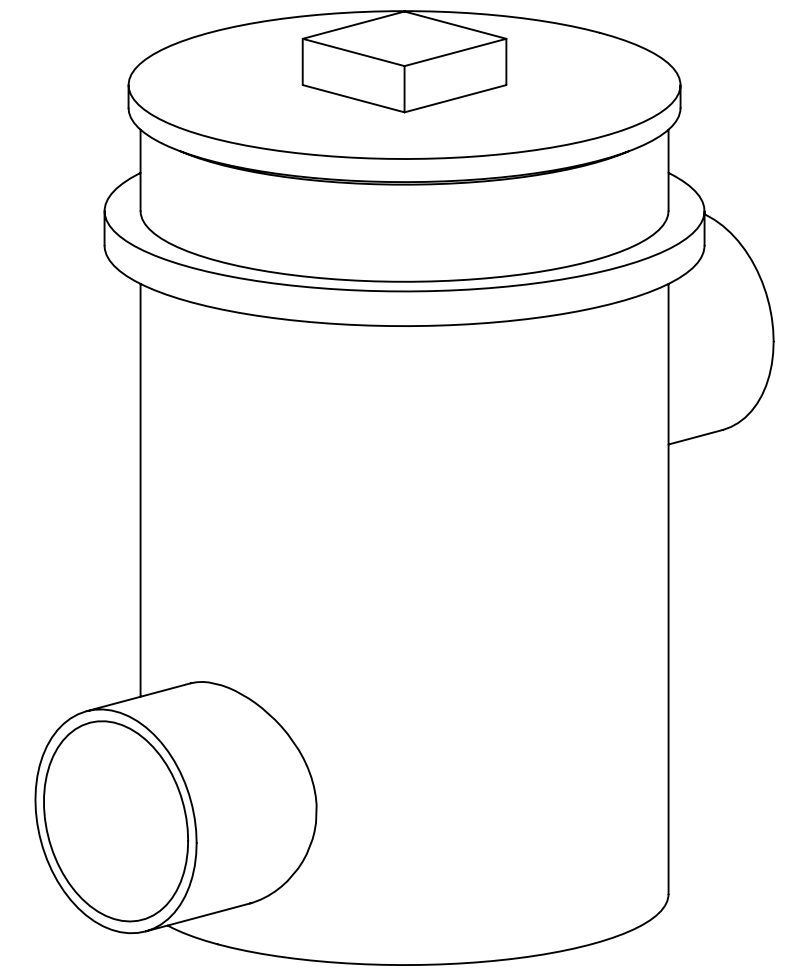
Striem solids interceptor model HLT/HLB-1176 shall be lifetime guaranteed and Made in USA of seamless, rotationally-molded High Density Polyethylene with minimum 3/8" uniform wall thickness. Interceptor shall be furnished with removable 304 series stainless steel basket. Interceptor shall be watertight up to 36" head and contain internal sewer gas trap. Interceptor shall have 4" hand-thread, gasketed top access.



HLT-1176-1 = 1-1/2" plain end connections
HLT-1176-2 = 2" plain end connections



HLB-1176-1 = 1-1/2" plain end connections
HLB-1176-2 = 2" plain end connections



PART NUMBER: HLT-1176/HLB-1176

DESCRIPTION:

1/2 GALLON LIQUID HOLDING CAPACITY
 POINT OF USE POLYETHYLENE SOLIDS
 INTERCEPTOR

DWG BY: TEU DATE: 8/20/08 REV: 1 - 1/12/11 MATL: PE

SPECIFICATION SHEET

Striem
 9500 Woodend Road
 Edwardsville, KS 66111
 Tel: 913-222-1500
 Fax: 913-951-3399
 www.striemco.com

Made in the U.S.A



PROPRIETARY AND CONFIDENTIAL

THE INFORMATION CONTAINED IN THIS DRAWING IS THE SOLE PROPERTY OF STRIEM, LLC. ANY REPRODUCTION IN PART OR AS A WHOLE WITHOUT THE WRITTEN PERMISSION OF STRIEM, LLC. IS PROHIBITED.